

**Publication:**Antiques and the Arts Weekly;**Date:**Oct 23, 2009;**Section:**The Gallery;**Page Number:**S-13

## 'Is White A Color?'

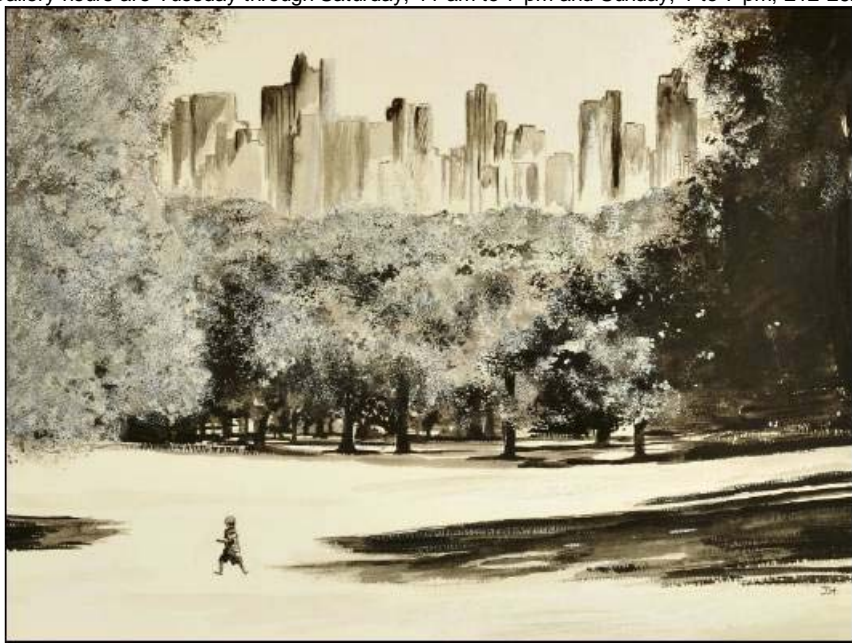
### A Group Exhibition Curated by Agnes Gund At Fountain Gallery

NEW YORK CITY — Fountain Gallery, 702 Ninth Avenue at 48th Street, represents artists living and working with mental illness. "Is White A Color?" is their new group exhibition, which is on view through November 11. The exhibition was curated by Agnes Gund. "The theme of the show came from the white lamb and the Virgin Mary at the feet of Christ on the cross in the central panel of the Isenheim Altarpiece painted by Matthias Grünewald at the Unterlinden Museum of Colmar," said Gund, president emerita of the Museum of Modern Art (MoMA) and founder and a trustee of Studio in a School Association. "The white of the lamb corresponds so brilliantly to the white of Mary's vestment and with the other images in the painting," continued Gund. "I asked the artists to make works evoking how they would interpret their feelings for white as a color, and I'm pleased that everyone has been so inspired." Concluded Gund, "Not only are the artists benefiting, but the viewing public also benefits by seeing that Fountain Gallery is a place where you can view fine works of art made by a group of excellent artists." "Is White A Color?" showcases more than 40 paintings, photographs, sculptures and mixed media works by 24 Fountain Gallery artists.

The exhibition program is supported, in part, by public funds from the New York City Department of Cultural Affairs, and by a grant from The Renate, Hans and Maria Hofmann Trust.

Fountain Gallery is the premier venue in New York City representing artists with mental illness. Founded in 2000 as a not-for-profit cooperative, the gallery exhibits work by a core group of Fountain House members and collaborates with a wide network of artists, curators and cultural institutions, providing a platform for exchange and public dialog. Embracing artists who are both emerging and established, trained and self-taught, Fountain Gallery cultivates artistic growth and makes a vital contribution to the New York arts community.

Artworks by gallery artists can be viewed at [www.fountaingallerynyc.com](http://www.fountaingallerynyc.com). For information about Fountain House, visit [www.fountainhouse.org](http://www.fountainhouse.org). Gallery hours are Tuesday through Saturday, 11 am to 7 pm and Sunday, 1 to 7 pm; 212-262-2756.



Justine Hall, "Central Park," 2009, gouache on paper, 14¾ by 11½ inches.





Martin Cohen, "Pink Bridge," 2009, mixed media on paper, 23 inches by 22 inches.